



# COZY CABLE SCARF

BY MARTY DAKAN



## FINISHED SIZE

7" wide, 60" long

## SKILL

Ambitious beginner

## GAUGE

4 sts = 1" in stockinette stitch

**TAKE THE TIME TO CHECK YOUR GAUGE**

## YARN

375 - 500 yds of worsted weight yarn  
(shown in 500 yds Classic Elite's Lush #4416)

## NEEDLES

US # 8

**OR SIZE NEEDED TO OBTAIN GAUGE**

## ABBREVIATIONS

3/3LC= Place next 3 sts on a cable needle and hold in front of work, k3 stitches, k3 sts from cable needle

3/3RC = Place next 3 sts on cable needle and hold in back of work, K3 sts, k3 sts from cable needle



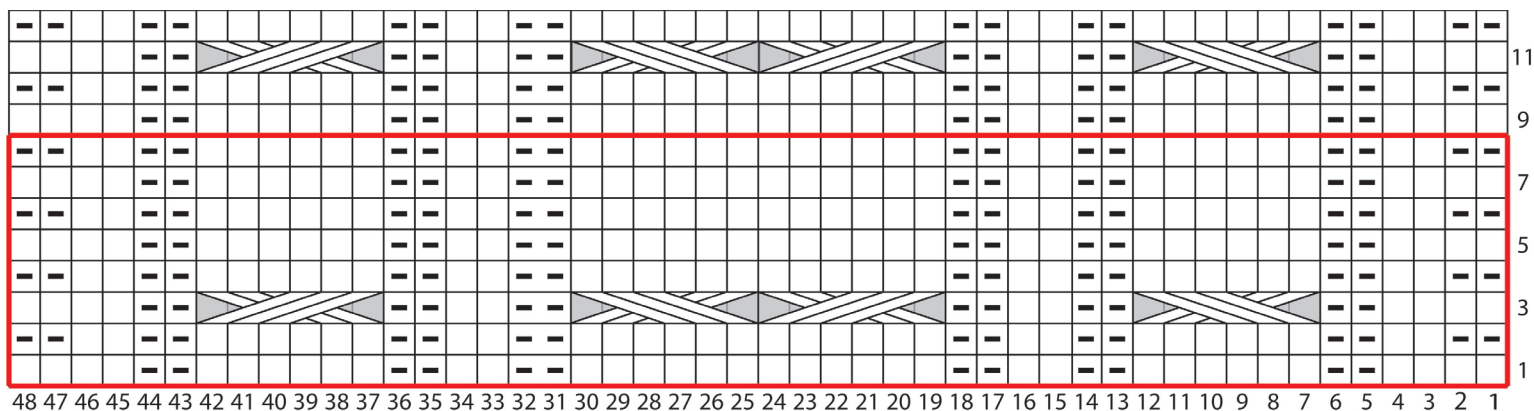
## PATTERN STITCH

- Row 1 K4, P2, K6, P2, K2, P2, K12, P2, K2, P2, K6, P2, K4  
Row 2 K2, P2, K2, P6, K2, P2, K2, P12, K2, P2, K2, P6, K2, P2, K2  
Row 3 K4, P2, 3/3LC, P2, K2, P2, 3/3RC, 3/3LC, P2, K2, P2, 3/3RC, P2, K4  
Row 4 repeat row 2  
Row 5 repeat row 1  
Row 6 repeat row 2  
Row 7 repeat row 1  
Row 8 repeat row 2

## BEGIN

Using the Cable Cast On method, CO 48 sts.  
Begin pattern stitch

Repeat pattern stitch until desired length., ending with row 6 of the pattern stitch. BO all stitches.  
Weave in ends and block.



Knit on the right side and purl on the wrong side



Purl on the right side and knit on the wrong side



3/3 RC - Slip next 3 sts to a cable needle and hold at BACK of work, k3, k3 from cable needle



3/3 LC - Slip next 3 sts to a cable needle and hold at FRONT of work, k3, k3 from cable needle

## ABBREVIATIONS

beg -begin/beginning

BO - bind off

CC - contrasting color

CO - cast on

dec - decrease

inc - increase

k or K - knit

k2tog - knit 2 sts together

MI - make 1

MC - main color

p or P - purl

pm - place marker

rep - repeat(s)

RS - right side/public side

sl - slip

ssk - slip, slip, knit 2

together through the back

loop

st(s) - stitch(es)

st st - stockinette stitch

tbl - through the back loop

WS - wrong side

YO - yarn over