

# Autumn Chevron Cowl

Annie Modesitt



## PATTERN INFO

*SIZES:* One Size

*FINISHED MEASUREMENTS:* 30"/ 76 cm circumference, 14-1/2" / 37 cm length.

*SKILL:* Level K2 Easy

*FIBER:*

[ModeKnit Yarn](#) ModeWerk SW Worsted (106yds /97m, 2oz/60gr)

Yarn A - Buckeye, 60 gr

Yarn B - Yellow Birch, 60 gr

Yarn C - October Sky, 60 gr

Yarn D - Maple Fire, 60 gr

*GAUGE:* 12 sts = 2-1/2" / 6.3cm, 8 rows = 1-1/2" / 3.8cm in Chevron Motif using size: 8 US/5mm.

*NEEDLES:* 8 US/5mm Circular

*NOTIONS:* Waste yarn (for provisional cast on), stitch marker

## STITCHES & SPECIAL TECHNIQUES

*ST ST* – *Stockinette Stitch*

Knit on right side, purl on wrong side

*REV ST ST* – *Reverse Stockinette Stitch*

Purl on right side, Knit on wrong side

*VDD* – *Vertical Double Decrease*

Sl 2 sts as if to work k2 tog-R, k1, pass slipped sts over (*decrease of 2 sts*)

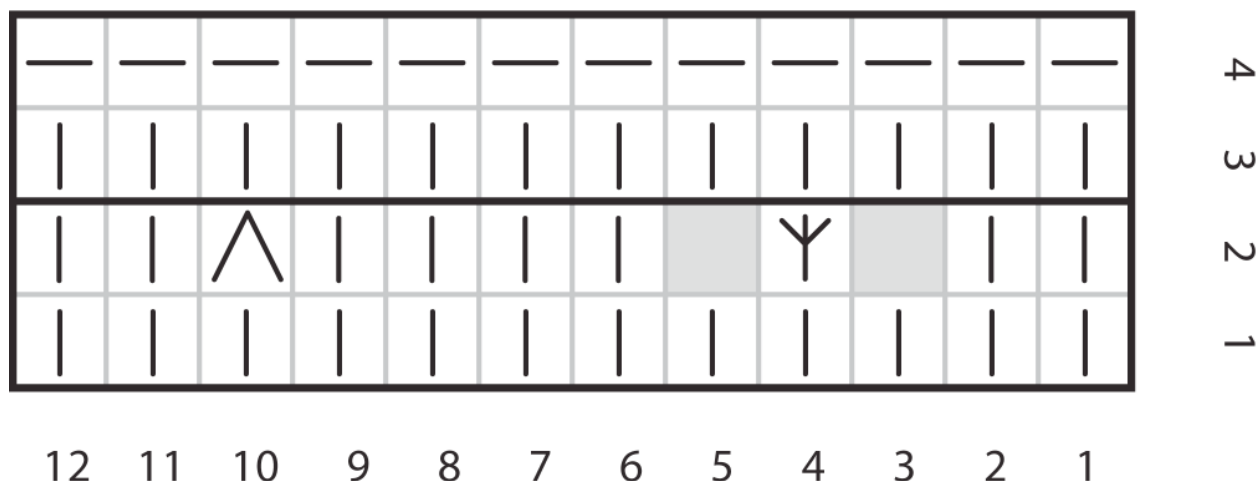
*VDI* – *Vertical Double Increase*

K into front of st, YO, k into back of same stitch.

*PROVISIONAL CAST ON*

This is a term used to describe a cast on which can be easily removed later, leaving a row of live stitches to be slipped onto a needle and worked. One favorite method is to crochet a chain in waste yarn with at least 10 more sts than you would like to cast on. Tie off the end of the chain, placing a knot in the tail.

# Autumn Chevron Chart



Slip your knitting needle into the bump at the back of each chain, creating a "stitch" on the needle. When desired, the chain can be loosened and pulled off at the knotted end.



## *I-CORD BIND OFF*

Cast 2 sts onto the LH needle immediately before the first st to be bound off. [K2, K2tog-L. Slip 3 sts from RH needle back onto LH needle. Pull yarn taut across back of work.] Repeat across work until 3 sts rem, K3tog-L.

## INSTRUCTIONS

### *Cast On*

With A and using a provisional cast on, CO 144 sts. Join work, placing marker to note start of round.

With B, k 1 round, then p 1 rnd. Rep these 2 rnds once more, 4 garter rnds worked, 2 ridges visible.

### *Begin Autumn Chevron Chart*

Chart Row 1: With C, knit all sts.

Chart Row 2: [K2, VDI, k4, VDD, k2]

Rep last 2 rows of chart twice more, 6 rounds total in Chevron Patt.

Chart Row 3: With B, knit all sts.

Chart Row 4: With B, purl all sts.

You have just complete the 8 round chevron pattern.



In each subsequent repeat, Chart Rows 3 & 4 will be worked in B, Chart Rows 1 & 2 will be repeated three times to create a 6-round section, the colors will alternate as follows:

Rnds 9-16: Substitute D for C

Rnds 17-24: Substitute A for C.

Repeat Rounds 1-24 twice more, 9 chevron bands. Work 2 more rounds of garter with B.

### *Bind Off*

With C work an i-Cord BO around all sts. Carefully slip provisional sts onto needle & work i-cord BO with any remaining color of yarn.

Use tail to join edges of bind off cord neatly. Weave in ends, steam block.



*I=Cord Bind Off, Close-Up*



### *NOTES ON CONSTRUCTION*

At the end of each Chart Row 2, move the marker 1 st to the left so that there will always be 2 sts on either side of the marker before the VDI and after the VDD.