

# Autumn Aspens

Sweaterscapes



This sweater captures the brilliance and mile-high blue sky of Colorado.  
An Intarsia Landscape Sweater design by Lynne & Douglas Barr





Copyright ©2009 Lynne & Douglas Barr  
e-mail: [knit@sweaterscapes.com](mailto:knit@sweaterscapes.com)  
[www.sweaterscapes.com](http://www.sweaterscapes.com)

# Instructions

---

## Finished Sweater Measurements

Chest: 42 (45,48) inches  
Length: 25 (27,29) inches

## Equipment

#6 and #8 needles (or size needed to obtain gauge)  
Row Counter  
Bobbins

## Materials

Peace Fleece yarns, 4 ounces/200 yard skeins

14 oz Galooboy Blue  
8 oz Shaba Green  
5 oz Khrushchev Corn  
4 oz Antarctica White  
2 oz Hand-dyed Gold  
2 oz Negotiation Grey  
2 oz Violet Vyechyeerom  
2 oz Soyuz-Apollo Teal  
1 oz Latvian Lavender  
1 oz Baikal-Superior Green  
1 oz Glastnost Gold

## Gauge

Stockinette Stitch: Using size 8 needles (or size needed to obtain gauge): 16 sts by 21 rows will make a 4 inch square.

## Knitting Intarsia

This pattern is knit by the intarsia method. Unlike Fair Isle or Jacquard knits, whose repeating color changes require strands of yarn to be carried across the wrong side of the sweater, in intarsia the blocks of color are worked with separate balls or bobbins of yarn, producing a sweater only one layer thick.

If you are knitting intarsia for the first time, we suggest that you visit our website, [www.sweaterscapes.com](http://www.sweaterscapes.com), where you will find complete illustrated instructions.

---

## Sweater Front

Using Shaba Green yarn and size 8 needle, cast on 82(90,94) stitches. Change to size 6 needles, and rib in K2, P2 pattern for 2 inches. Increase 2(0,2) stitches after rib.

Change to size 8 needles and follow sweater chart for the front (page 5).

Knit stitches on chart:  
small 13-96      medium 7-96      large 1-96  
Knit rows on chart:  
small 13-151      medium 7-155      large 1-159

Begin neck shaping on row 128.

We recommend using short-row wrapping for the neck opening. It eliminates the seam between sweater and neck rib and produces a neck opening with the proper stretch.

Illustrated instructions can be viewed at [www.sweaterscapes.com](http://www.sweaterscapes.com).

## Sweater Back

Using Shaba Green yarn and size 8 needle, cast on 82(90,94) stitches. Change to size 6 needles, and rib in K2, P2 pattern for 2 inches. Increase 2(0,2) stitches after rib.

Change to size 8 needles and follow sweater chart for the back (page 7).

Knit stitches on chart:

small 1-84      medium 1-90      large 1-96

Knit rows on chart:

small 13-151      medium 7-155      large 1-159

---

## Finishing

Weave in the ends from the intarsia knitting.

Block sweater pieces before assembling and knitting the neck rib. All you need is a wet, lightweight cotton dishtowel (it should be neither dripping nor wrung out to the point that it's almost dry), a hard surface with a bath towel laid out flat on it, and a steam iron set to "wool". Lay the knitting piece on the towel, cover it with the wet dishtowel, and press it lightly with the iron. *Voilà* – it's blocked. If you have been careful about testing your gauge, you should not have to pin, stretch, or reshape the sweater in order to fit the desired measurement .

## The Neck Rib

Work neck using Galooboy Blue yarn.

If your shoulder stitches are still on needles, bind off the front and back stitches together at the right shoulder. Otherwise, sew the right sweater shoulder.

**If traditional bind-off method was used for neck shaping** - pick up 82(90,98) stitches around the neck opening.

**If short-row wrapping was used for neck shaping** - with sweater front facing you, pick up 14(15,16) stitches at right front edge. Knit front neck stitches on the needle from short-row wrapping, hiding the wraps as you knit. Pick-up 14(15,16) stitches and continue knitting stitches on neck back. You should have 82(90,98) stitches on your needle for the neck rib.



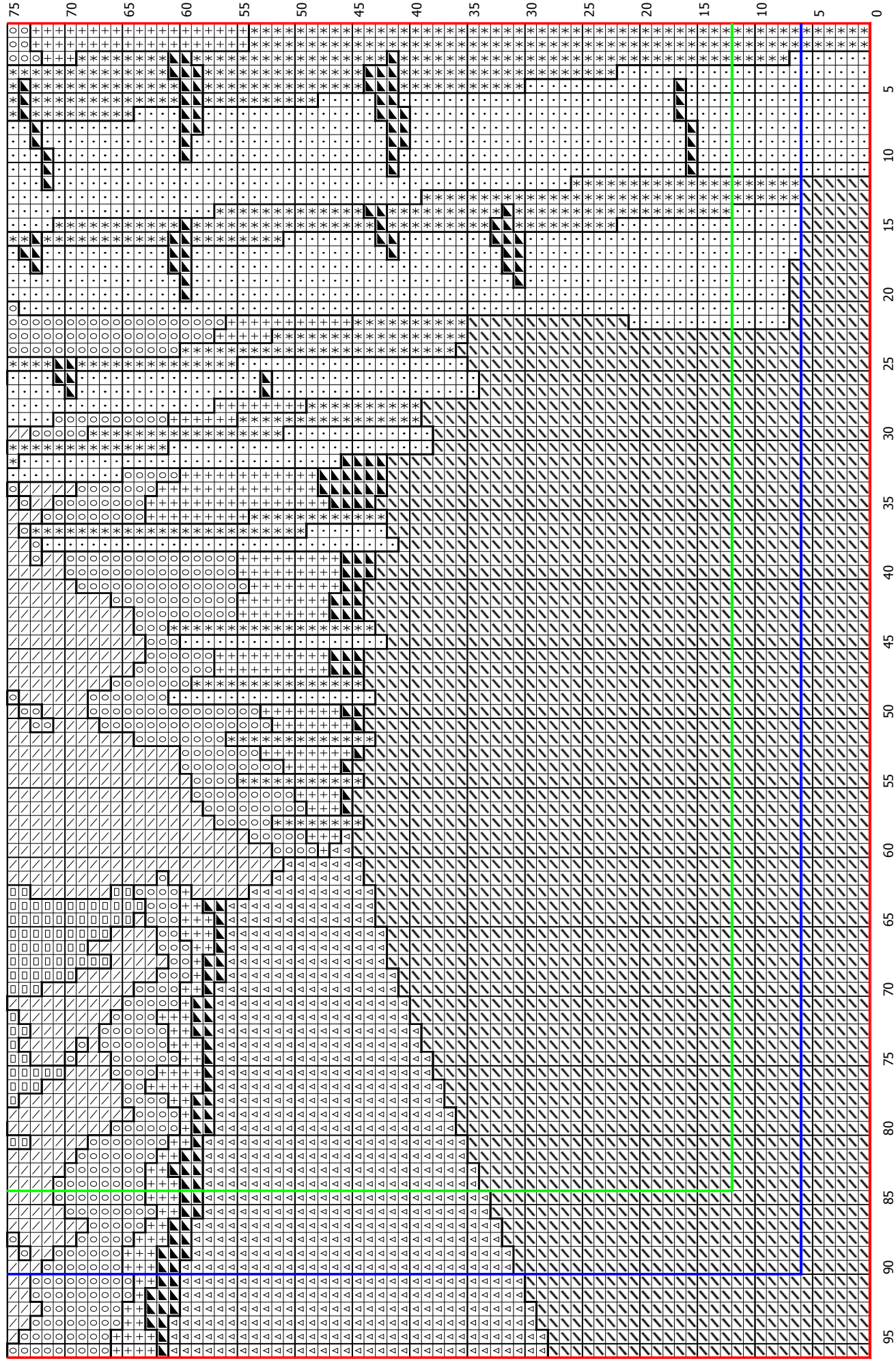
Rib in K2, P2 pattern using size 6 needles for 1½ inches. Bind off.

Using size 6 needles and Galooboy Blue yarn, cast on 38 sts and rib in K2,P2 for 1½ inches. Change to size 8 needles. Working in Stockinette stitch, increase 4 sts evenly spaced across first row. Then increase 1 stitch each side, 2 stitches in from edge, starting on row 5 and every fifth row thereafter until there are 74(78,82) stitches.

For the **right sleeve**, knit the entire sleeve in Galooboy Blue.

If you knit the neck rib on straight needles, sew left shoulder, or bind off shoulders together. Attach sleeves. Sew side and sleeve seams.

□ = Galooboy Blue    ▤ = Khrushchev Corn    ◯ = Hand-dyed Gold



- = Galooboy Blue
- = Shaba Green
- = Khrushchev Corn

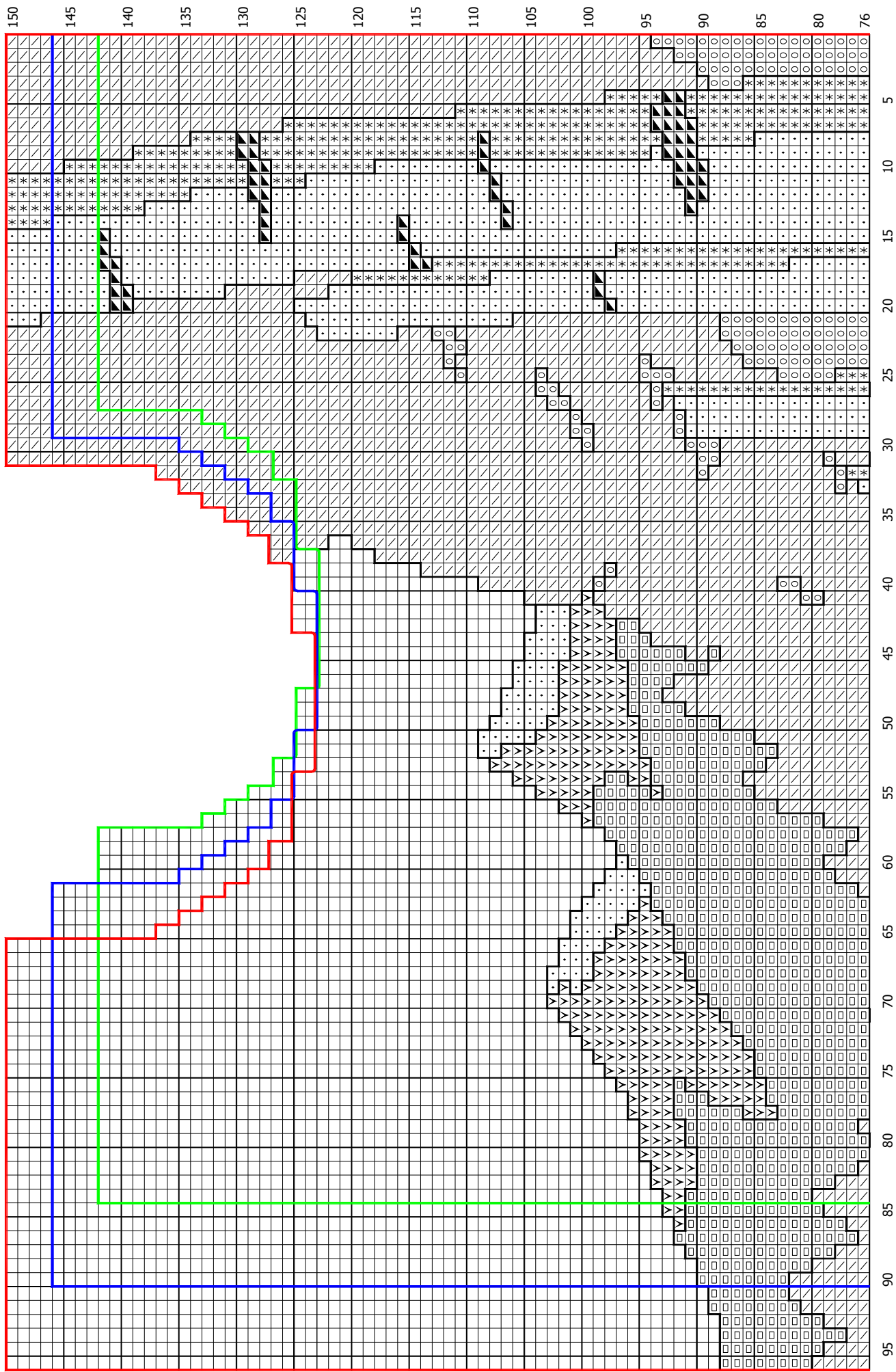
- = Antarctica White
- = Negotiation Grey
- = Violet Vyechyeerom

- = Soyuz-Apollo Teal
- = Hand-dyed Gold
- = Latvian Lavendar

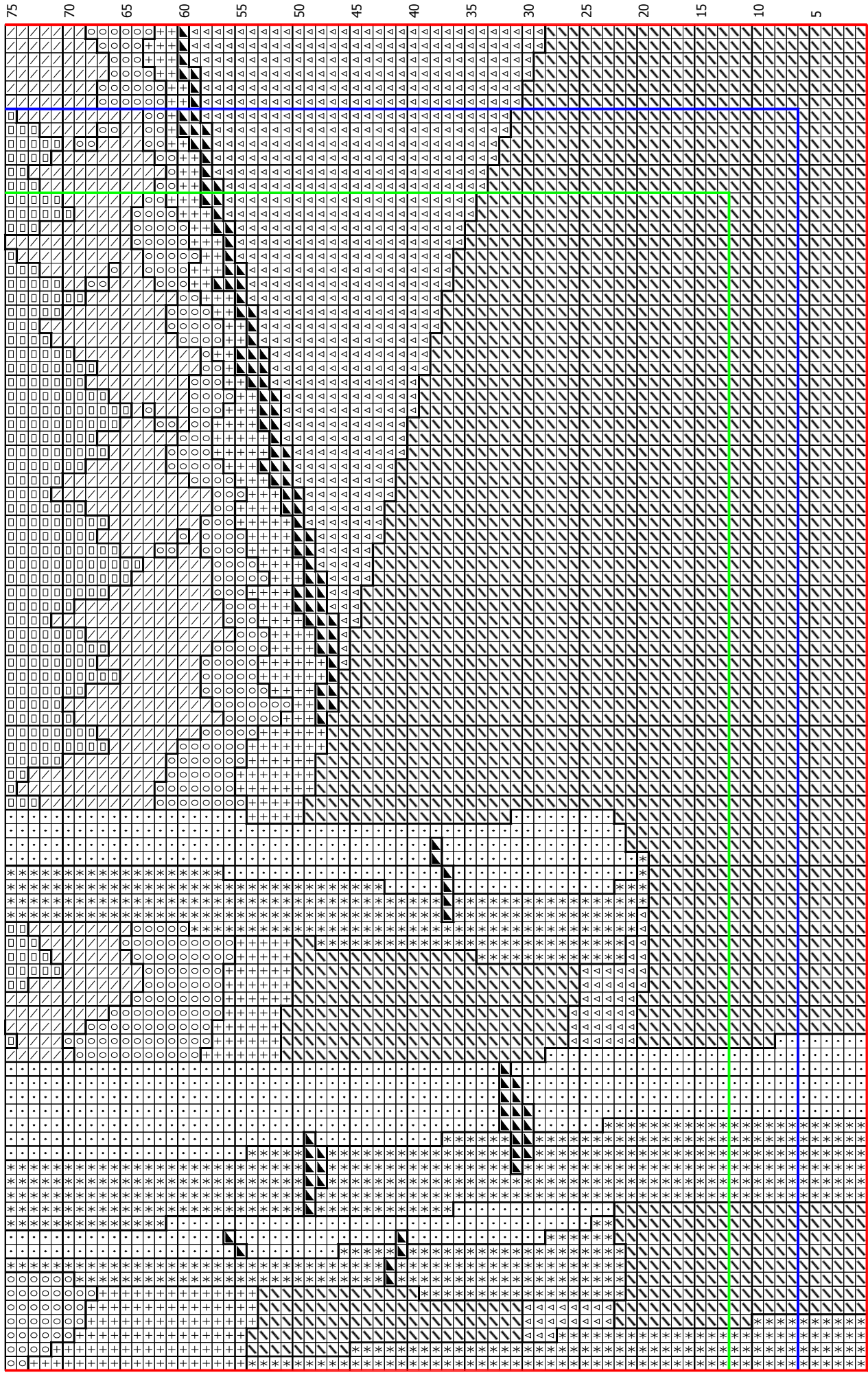
- = Glasnost Gold
- = Baikal-Superior Green

bottom half **Front**

# top half Front







# bottom half Back

- ☐ = Galooboy Blue
- ☒ = Shaba Green
- ☒ = Khrushchev Corn
- ☐ = Antarctica White
- ☒ = Negotiation Grey
- ☐ = Violet Vyehchyeerom
- ☐ = Soyuz-Apollo Teal
- ☐ = Hand-dyed Gold
- ☐ = Latvian Lavendar
- ☒ = Glasnost Gold
- ☒ = Baikal-Superior Green

# top half Back

